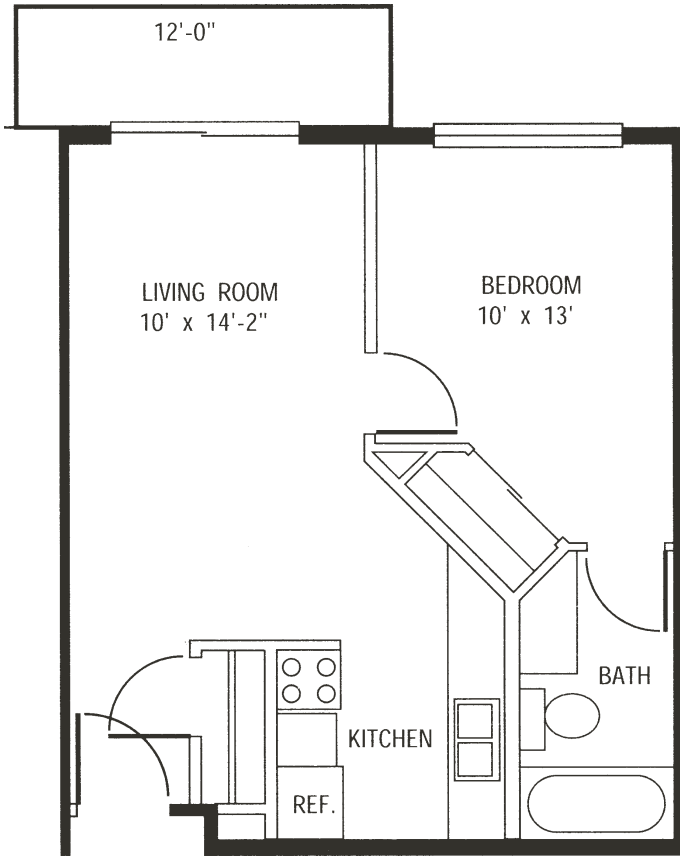


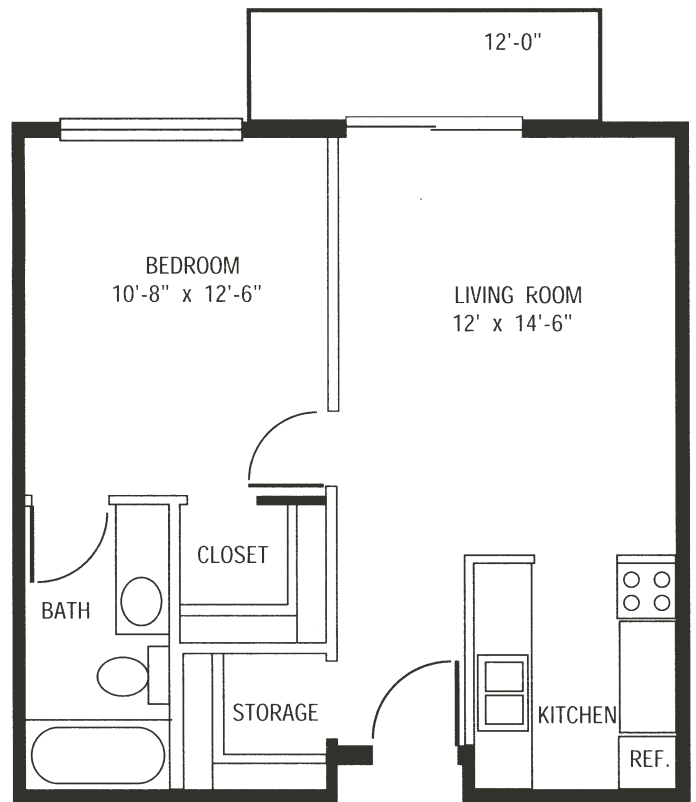
# Floor Plans



## 1 BEDROOM 480 sqft (approx)



## 1 BEDROOM 550 sqft (approx)



*\*Other floor plans available*



**AVAMERE**  
Court at Keizer

5210 River Rd N, Keizer, OR 97303  
**P:** 503-393-3624 **F:** 503-393-0108  
 AvamereCourtAtKeizer.com

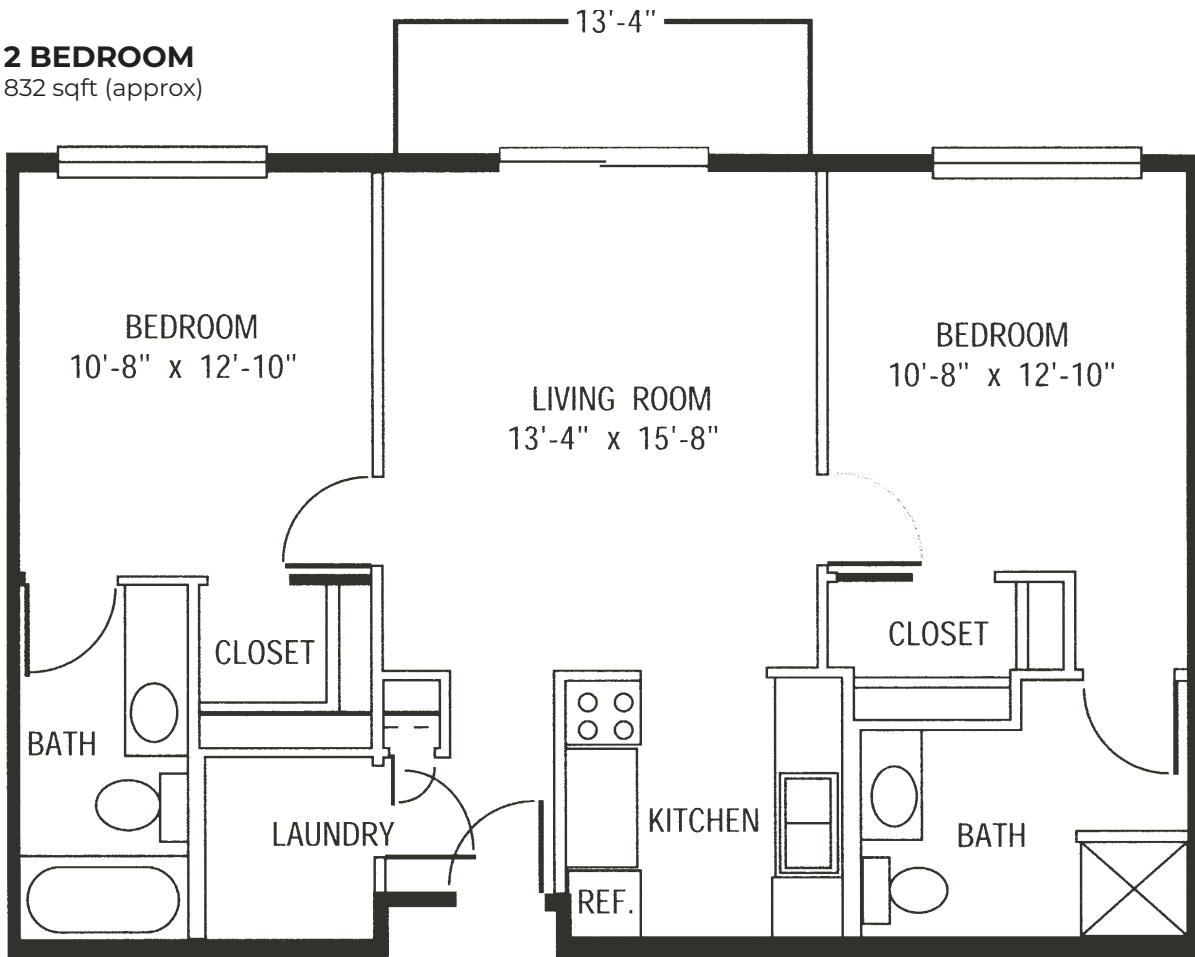


The Avamere Family of Companies complies with applicable federal civil rights laws and does not discriminate on the basis of race, color, national origin, age, sex, or disability in admissions, treatment, or participation in its programs, services, activities or employment practices.

# Floor Plans



## 2 BEDROOM 832 sqft (approx)



*\*Other floor plans available*



**AVAMERE**  
Court at Keizer

5210 River Rd N, Keizer, OR 97303  
**P:** 503-393-3624 **F:** 503-393-0108  
AvamereCourtAtKeizer.com



The Avamere Family of Companies complies with applicable federal civil rights laws and does not discriminate on the basis of race, color, national origin, age, sex, or disability in admissions, treatment, or participation in its programs, services, activities or employment practices.